

# MONTEREY®



Monterey shown with Sand shell



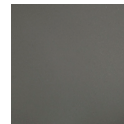
Monterey shown with Sand shell

<b>Seating Capacity</b>	7 adults
<b>Dimensions</b>	7'3" x 6'5" x 34"/2.21m x 1.96m x 0.86m
<b>Water Capacity</b>	325 gallons/1,477 litres
<b>Weight</b>	376 lbs./171 kg dry; 4,852 lbs. 2,201 kg filled*
<b>Jets - 22</b>	22 jets with stainless steel trim
<b>Waterfall</b>	Included
<b>Jet Pump</b>	Two-speed 1.5 BHP
<b>Control System</b>	Plug 'n' Play 230v/13amp, 50 Hz Includes G.F.C.I. protected sub-panel
<b>Lighting</b>	LED
<b>Heater</b>	2kW
<b>Energy Efficiency</b>	EcoFlow™ Technology; Certified to the California Energy Commission (CEC) in accordance with California law
<b>Effective Filtration Area</b>	50 sq. ft.
<b>Vinyl Cover</b>	Grey or Mahogany
<b>Cover Lifter (Optional)</b>	Rock-It
<b>Steps (Optional)</b>	Matching Freeflow steps

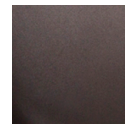
#### Shells:



Sand



Taupe



Espresso

#### Special order colours:



Blue



Orange



Green

\* Includes water and 7 adults weighing 79kg each